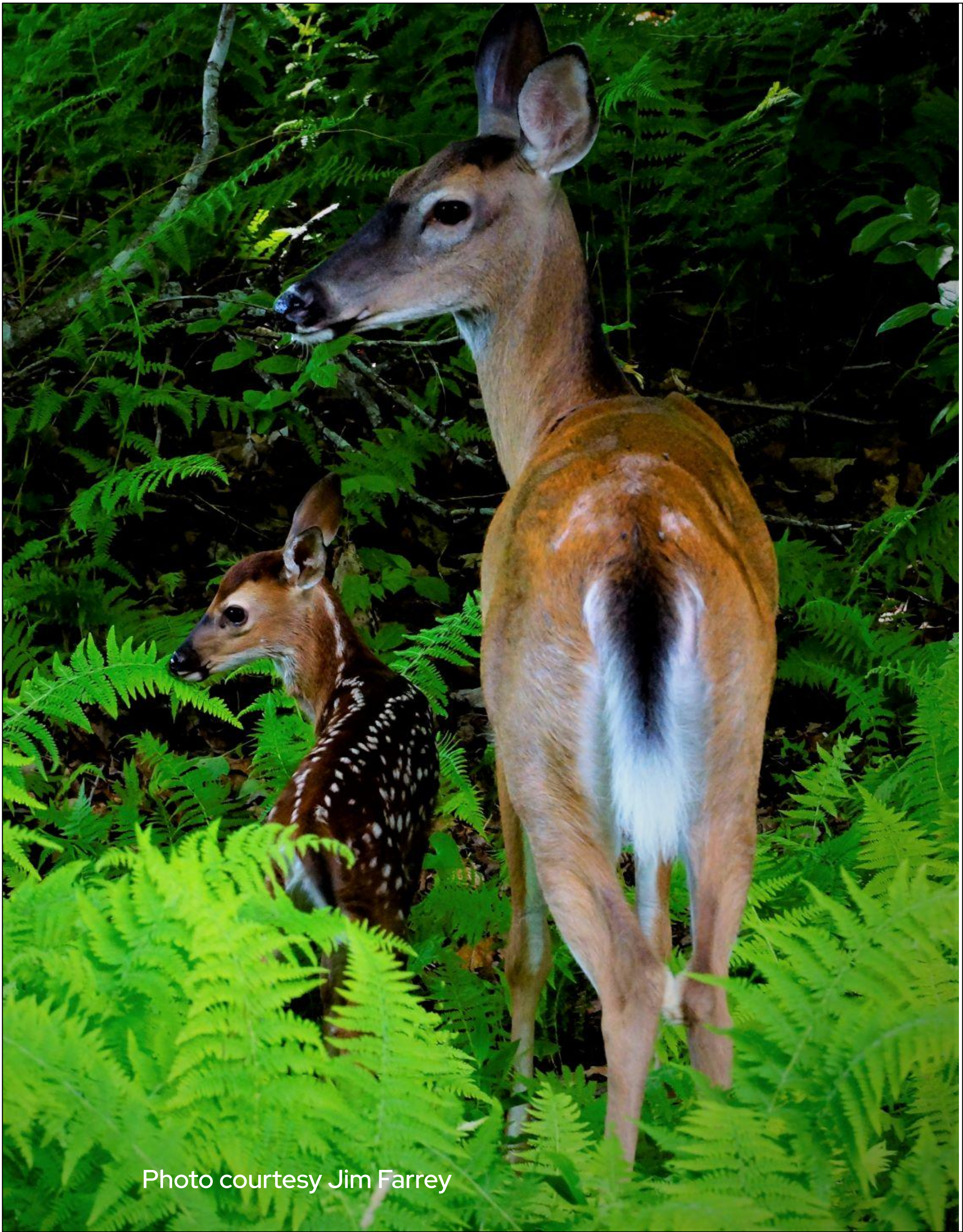




Natural Resources Stewardship Committee  
Protecting the health and sustainability of the  
natural environment within Connestee Falls.



# Goal #1-Keep Wildlife Wild





## Goal #2-Protect Water Resources



Lakes and Streams



# Goal #3-Protect Native Habitat

---



Defining "The Bog Shed"



# Identifying Critical Habitat Areas



Reptiles and Amphibians





# Invasive Plant Mitigation

---





# Treating Hemlocks for WHA





# Monitoring For Invasive Intruders



Species of immediate concern in NC:  
(clockwise)

Spotted lanternfly  
(*Lycorma delicatula*)

Emerald ash borer  
(*Agrilus planipennis*)

Asian long horned beetle  
(*Anoplophora glabripennis*)

European gypsy moth  
(*Lymantria dispar*)





# Education and Outreach Programs

---





# Guided Hikes, Walks and Talks

---

